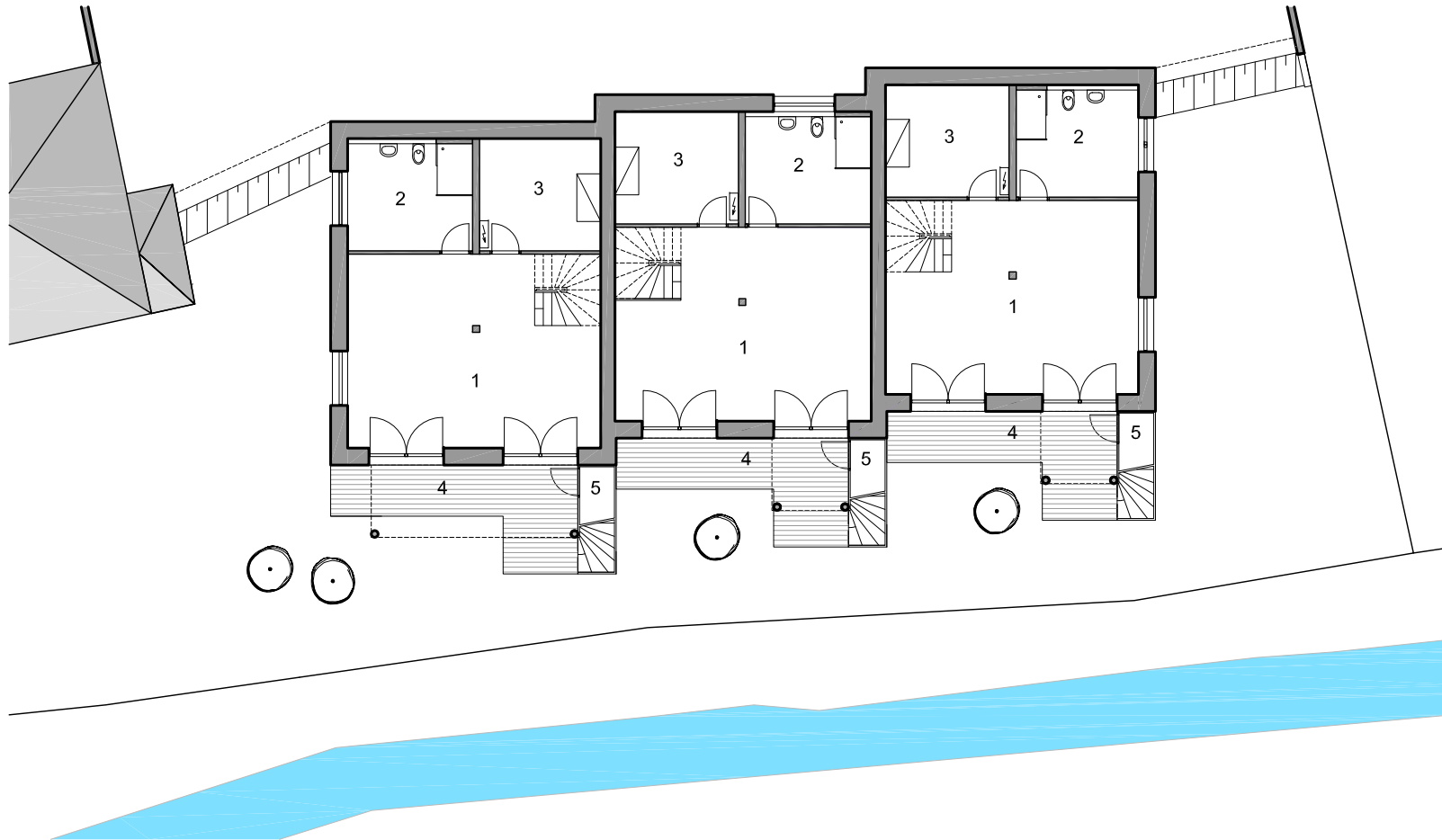


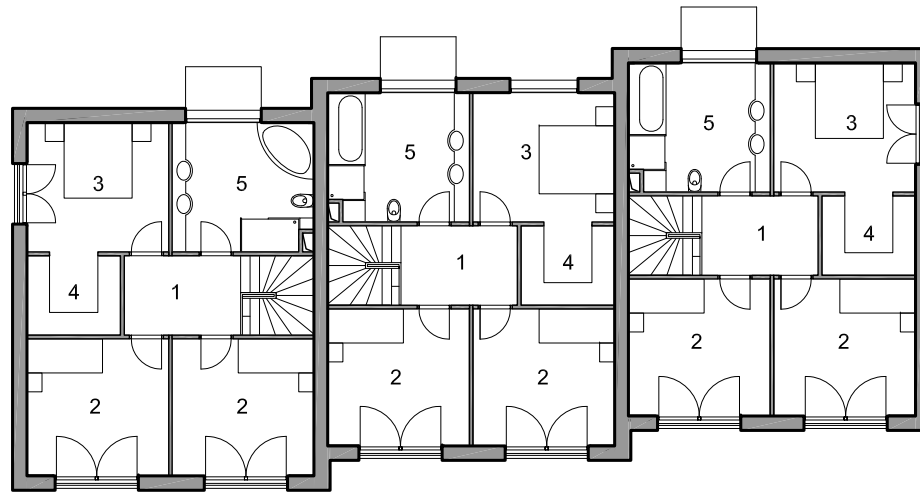
EG / 0

1 Diele / entrance, 2 Wohn-Ess-Küche / living room - dining room - kitchen, 3 Zimmer / bedroom, 4 Dusche - WC / shower - wc, 5 HWR / laundry room, 6 Balkon / balcony





Architekt Thomas Abendroth



OG / 1

1 Diele / corridor, 2 Kind / children, 3 Eltern / Parents,
4 Garderobe / wardrobe, 5 Bad / bathroom

